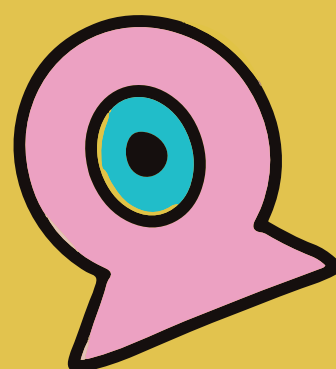


# DAS International Services Ltd

ANNUAL REPORT FY2019-2020



## About DAS International Services Ltd.

DAS International Services Ltd is a wholly-owned subsidiary of the Dyslexia Association of Singapore (DAS) and is part of the DAS Group of companies.

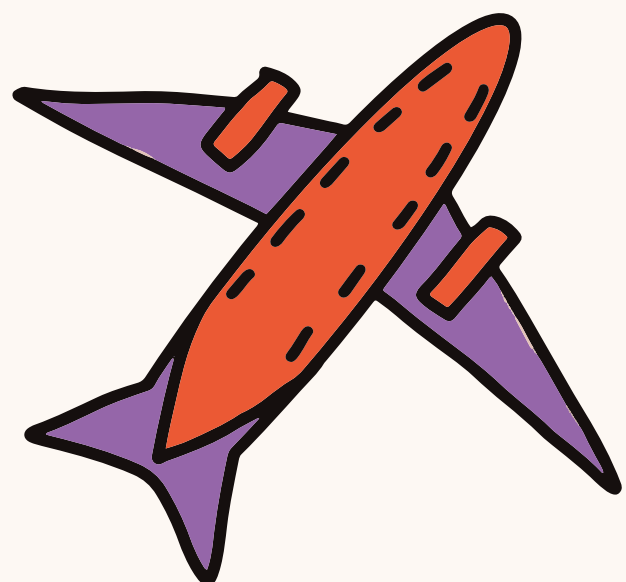
DAS International Services builds upon the recognised experience, competence and expertise of DAS who has provided services to individuals with learning differences for more than 25 years.

DAS International provides high-quality one-to-one specialist services to students in Singapore and the region who have a range of Specific Learning Differences, behavioural difficulties and developmental disorders so that they can achieve and reach their full potential.

DAS International provides a total solution for your child's educational needs. We support students with learning differences and aim to close the gap in their learning. We can provide individualised programmes to empower successful learning for students from preschool to young adulthood. We, therefore, ensure that the level of service provided to individuals and schools in the region is of the highest standard using up to date and evidence-based resources.



Head, DAS International  
Services Ltd



# About Our Programmes

## Services Provided

Since its inception in 2011, DAS International has been providing one to one Specialist support for students with literacy and Maths challenges through a customised one to one programme. In response to demand DAS International has responded with new initiatives that aim to support students with Specific Learning Differences (SpLDs) in Singapore and the region. Services provided by DAS International include:

- Specialist Tutoring
- Online Tutoring
- Regional Awareness
- Training
- Overseas Assessments



## Specialist Tutoring

Specialist Tutoring offers an individualised problem-solving approach and is intended for students with Specific Learning Differences such as Dyslexia, Maths Learning Difficulties, who seek or require one to one Specialist Tutoring. Specialist tutoring adopts a problem-solving approach through the development of an individualised programme that aims to bridge the gaps in the child's learning.

The programme is open to Preschool students at risk of Dyslexia as well as to Primary, Secondary, and tertiary students with a valid diagnosis of a Specific Learning Difference.

The aim of Specialist Tutoring is to effectively support the development of each child. Each child is seen as an active, competent learner, especially children who have Specific learning differences (SpLd), wanting and in need of a value-added programme / specialist support.

Specialist tutoring is individually tailored, based on the profile of the child obtained both externally through previous psychological reports or through our in-house psycho-educational assessments, and in consultation with parents and educators. Specialist Tutoring further supports the learning needs of our more challenged students who may have difficulty entering International schools in Singapore.



# New Initiatives

## Services Expanded

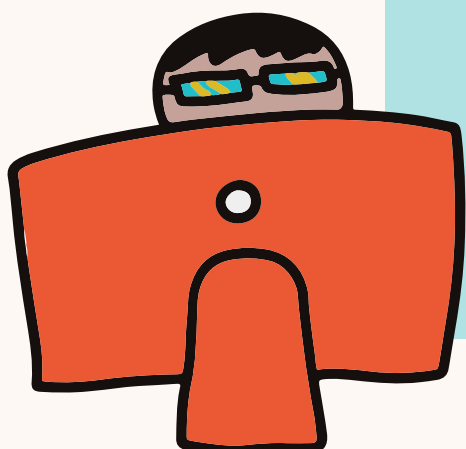
DAS International expanded its line-up of Specialist tutoring to include Speech and Language Therapy (SLT), which under its service listing had nine students receiving SLT under DAS International.

For FY2020-2021, DAI Specialist Tutoring has also expanded to include Curriculum Support, Maths, Chinese, and Exam Skills and the expansion of Online Specialist tutoring for both overseas and Singapore based students.

To enrich networking between like-minded organisations in the Asia Pacific Region, DAS International hosted an International Session at the UNITE SpLD Conference in 2019.



The International session had an impressive and diverse line-up of speakers, including Phyllis Wamucii Muny-Kariuki the Founder and Director of the Dyslexia Association of Kenya, Dr Kristiantini Dewi, the Presidents of the Indonesia Dyslexia Association, Masarrat Khan the Chief Executive Officer of the Maharashtra Dyslexia Association. These speakers shared their invaluable experiences and learning journey's in support of students with Specific Learning differences to a captivated international participant audience.





## Overseas Training in China

Through networking efforts, this has since translated into overseas training contracts with several organisations for FY2019-2020. DAS International training conducted several training assignments in China on “Understanding Dyslexia and Supporting Learners in Chinese” on 30 June to 1 July 2019 at Shenzhen Children’s hospital and “Supporting your child in Chinese” on 14 to 15 December 2019, in Shenzhen and Guangzhou. The training saw educators from the early childhood education sector, teachers from elementary schools and social workers keen on advanced training for dyslexia in Chinese and other specific learning

differences. The participants enjoyed hands-on learning in workshops on orthographic awareness movement, how a child with dyslexia experiences the world, Chinese character writing with water and leading learners to use body language to sense character structures

DAS International looks forward to 2020 in facilitating future training opportunities in China and the Asia Pacific Region.



(Left to right) Specialist Trainers Li Dong, Priscillia Shen, Lee Meiyu and Cailyn Kwan in Guangzhou.



## Supporting Your Child in Chinese Training in Shenzhen



Demonstration on writing Chinese characters with water.



Orthographic awareness movement session.



Introduction to Word Recognition Skills.



Using body movements to sense different Chinese characters.

Participants were tasked to write their Chinese surname correctly on a sticky note stuck to their foreheads.

The task was a simple simulation to understand the experiences of what children with dyslexia encounter when learning to write Chinese characters.





## Supporting Your Child in Chinese Training in Guangzhou



Orthographic awareness movement session.



Introduction to Dyslexia in Singapore.



Participants watch the Dyslexia short film made for Dyslexia Association of Singapore.



A participant's show and tell of the outcome of his group activity. Participants were given the task to brainstorm and create a pictogram for the Chinese character 泳 which means swimming.

Pictorial guides allow children to associate Chinese Characters with their definitions.



One team was tasked to create a pictogram for the Chinese character for 'far'.





# Programme Overview

## Student and Teacher Numbers

There were a total of 84 students who attended Specialist Tutoring and nine students who attended one-to-one Speech and Language Therapy. The total of students who attended classes in FY2019-2020 was 93.

DAS International has 14 Specialist Teachers and three Speech-Language Therapists.

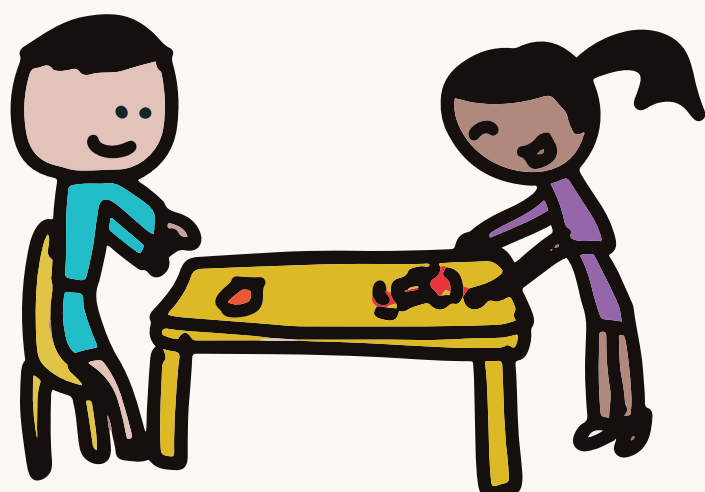
## School Profiles

Out of 93 students, 25 students attend international schools and 68 student attend Ministry of Education Schools.

## Sources of Referral

DAS International receives referrals from different sources. The number of students for each referral source is:

- DAS Specialised Educational Services and Specialised Assessment Services - 30 students
- Friends and Relatives - 11 students
- School Teachers - 20 students
- DAS Websites - 32 students



## Student Profiles

Students accessing support programmes at DAS International have a range of educational needs. These are the student profiles we have supported in FY2019-2020:

- Dyslexia - 46 students
- Dyslexia and Maths Learning Difficulties - 15 students
- Dyslexia and Speech & Language Impairment and/or Dyspraxia Speech & Language Impairment - 18 students
- Autism - 3 students
- Dyslexia and Autism - 3 students
- Dyslexia and ADHD - 5 students





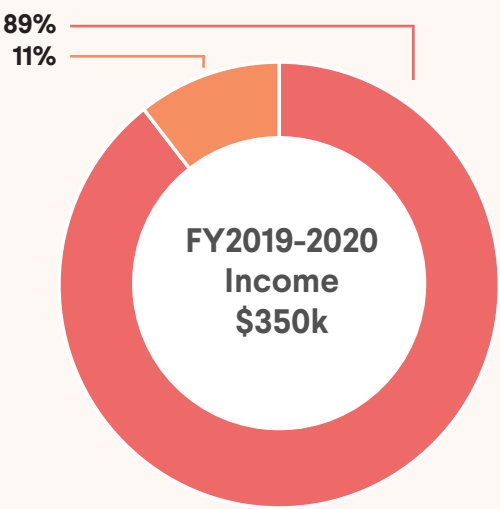
# **DAS International Services Ltd. Facts and Figures**

---

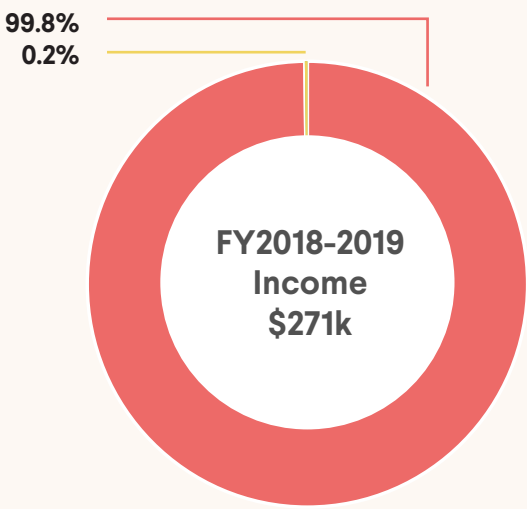


# Financial Activities

## Sources of Income

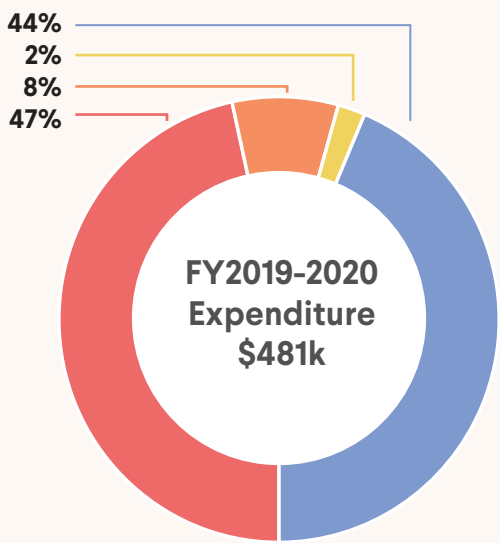


- Tuition fees \$313.4k (89%)
- Training fees \$36.9k (11%)
- Others \$0 (0%)

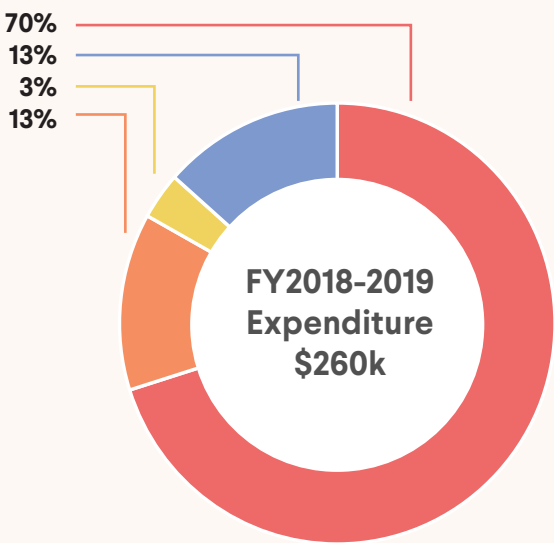


- Tuition fees \$270.8k (99.8%)
- Training fees \$0 (0%)
- Others \$500 (0.2%)

## Distribution of Expenditure



- Trainer and Other Related Costs \$224.1k (47%)
- Administrative Expenses \$37.4k (8%)
- Other Operating Expenses \$9.6k (2%)
- Return of Grant to Parent \$210k (44%)



- Trainer and Other Related Costs \$182.5k (70%)
- Administrative Expenses \$33.8k (13%)
- Other Operating Expenses \$8.9k (3%)
- Return of Grant to Parent \$35k (13%)